



Lightroom Bitesize: Backing up the catalogue

Before we go into the details of how to back-up the catalogue, it may be worth understanding WHY we need to do so. And we do need to do this - it is very, very important.

It may surprise you to know, and in fact you may initially not believe this, but whenever you do any post-processing to an image in Lightroom - and that includes adding keywords, changing exposure, sharpening or converting to black & white - the original image file imported from your camera is NOT changed in any way. Instead, Lightroom creates a new file that just contains all the data relating to the processing.

Don't believe it?

Here's a screenshot of the image files from the first evening of a North Wales photoshoot as we took a stroll up Rhyll's promenade. At least two of these have been post-processed in Lightroom since then. Notice anything unusual?

Hopefully you will notice that the 'date modified' is the same for every file. In fact, that's the date the image was taken.

Lightroom hasn't changed the original image files at all - despite my processing work. That's because all of the data from the processing is stored in a separate file.

Name	Date modified	Type	Size
_IGP0003	01/09/2012 18:39	DNG File	16,563 KB
_IGP0004	01/09/2012 18:39	DNG File	16,537 KB
_IGP0005	01/09/2012 18:39	DNG File	16,517 KB
_IGP0006	01/09/2012 18:40	DNG File	16,540 KB
_IGP0007	01/09/2012 18:58	DNG File	16,544 KB
_IGP0008	01/09/2012 18:58	DNG File	16,531 KB
_IGP0009	01/09/2012 18:58	DNG File	16,551 KB
_IGP0010	01/09/2012 18:58	DNG File	16,588 KB
_IGP0011	01/09/2012 19:06	DNG File	16,566 KB
_IGP0012	01/09/2012 19:06	DNG File	16,559 KB
_IGP0013	01/09/2012 19:06	DNG File	16,550 KB
_IGP0014	01/09/2012 19:06	DNG File	16,546 KB
_IGP0015	01/09/2012 19:07	DNG File	16,556 KB
_IGP0016	01/09/2012 19:07	DNG File	16,564 KB
_IGP0017	01/09/2012 19:07	DNG File	16,554 KB
_IGP0018	01/09/2012 19:54	DNG File	16,613 KB
_IGP0019	01/09/2012 19:54	DNG File	16,571 KB

This file, and the information that links this new file to the original image file, is stored in the catalogue. And so if your catalogue gets corrupted you lose ALL of the processing information from ALL of the images in Lightroom. Admittedly you will still have the original image files but all of them will be the same as when you imported them from your camera.

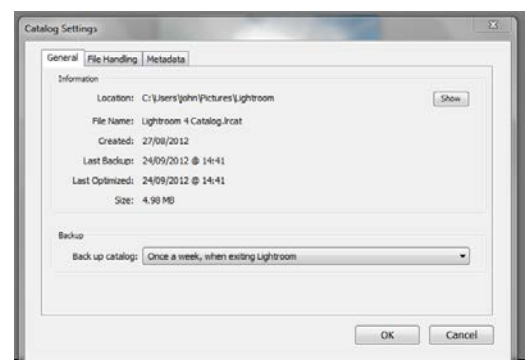
Now, as you import your images, hopefully you will have set up Lightroom to backup the image files to a different hard drive. But now you need to set up Lightroom to backup the catalogue as well.

Click on Edit and then choose Catalog Settings...

First we need to specify where the backup file is to be located - and this is achieved in a peculiar way.

First set the backup to occur every time Lightroom exits by choosing that setting in the drop-down box.

Press OK and exit Lightroom.





Now the Back-up dialog box will display - and you can use the 'choose' option to specify the back-up file location. Preferably, use a different drive than the one used for the actual catalogue.

Press the 'back-up' button to start the backup.

